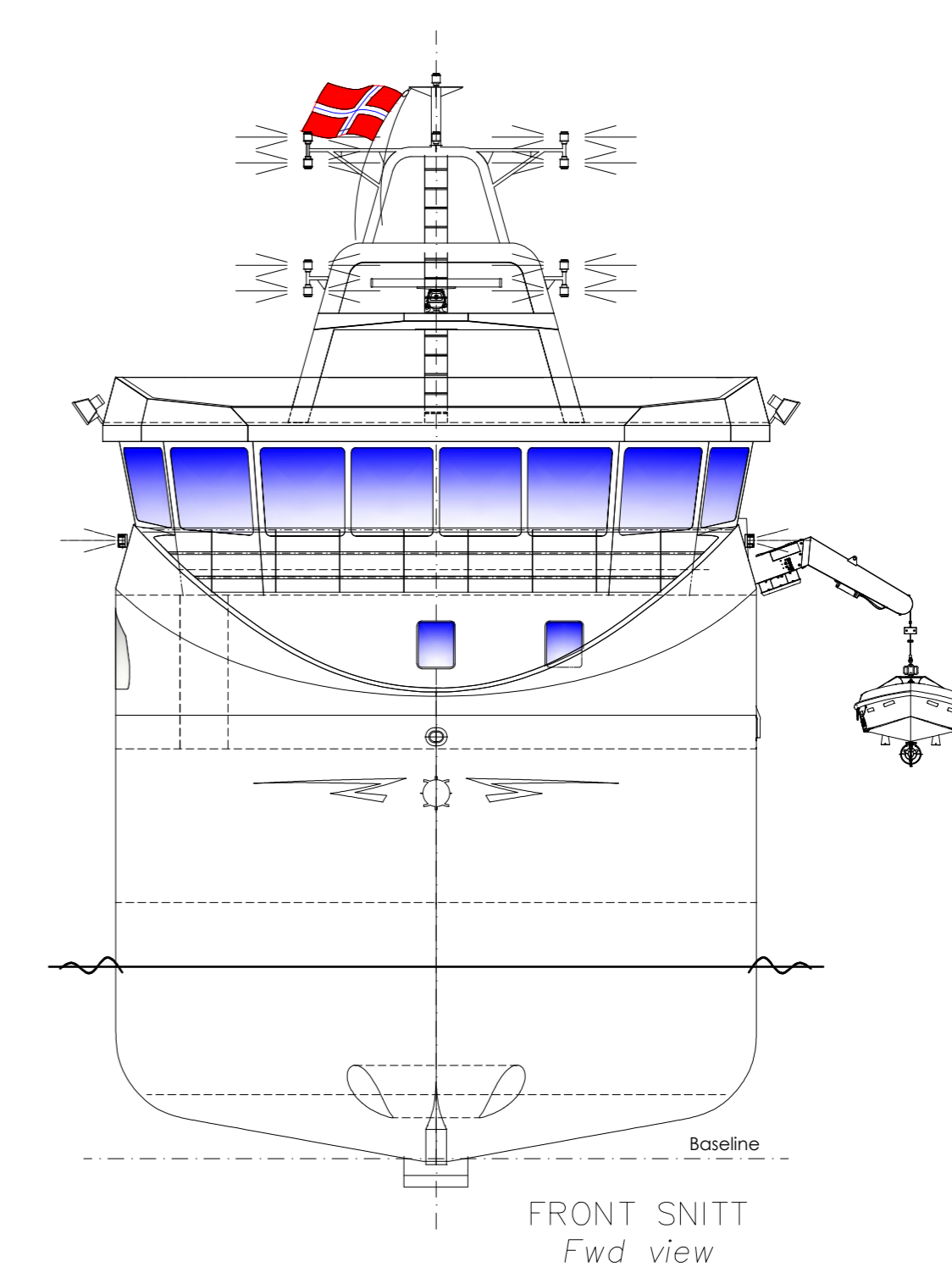
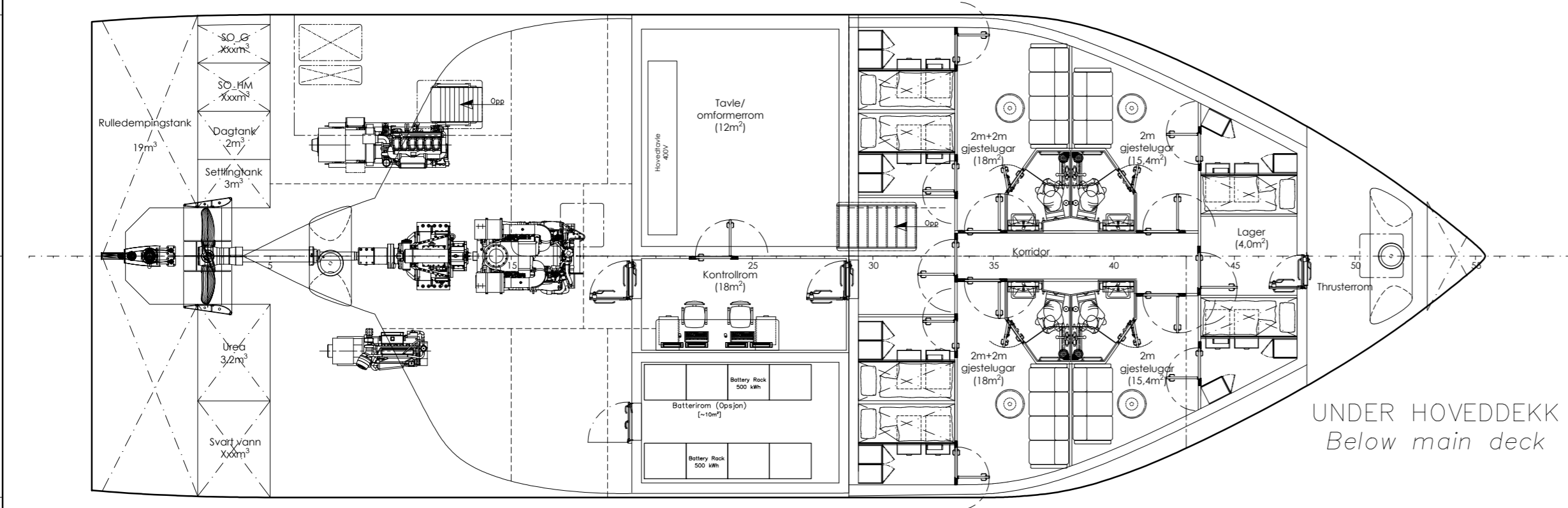
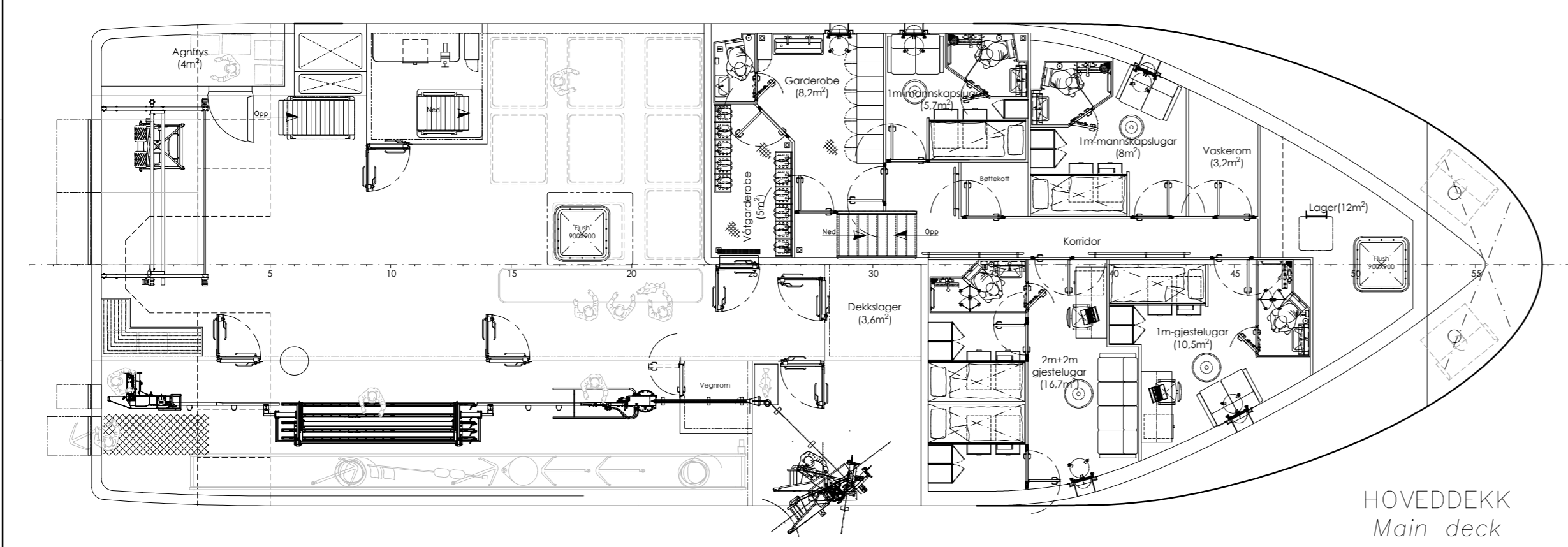
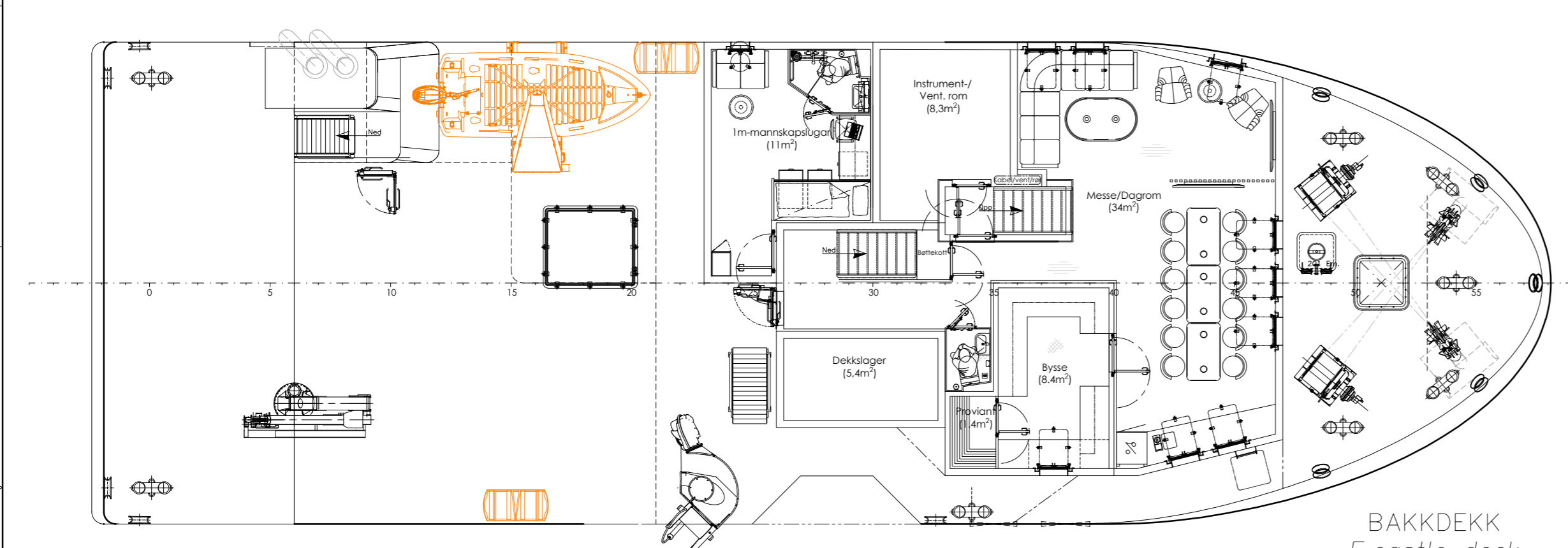
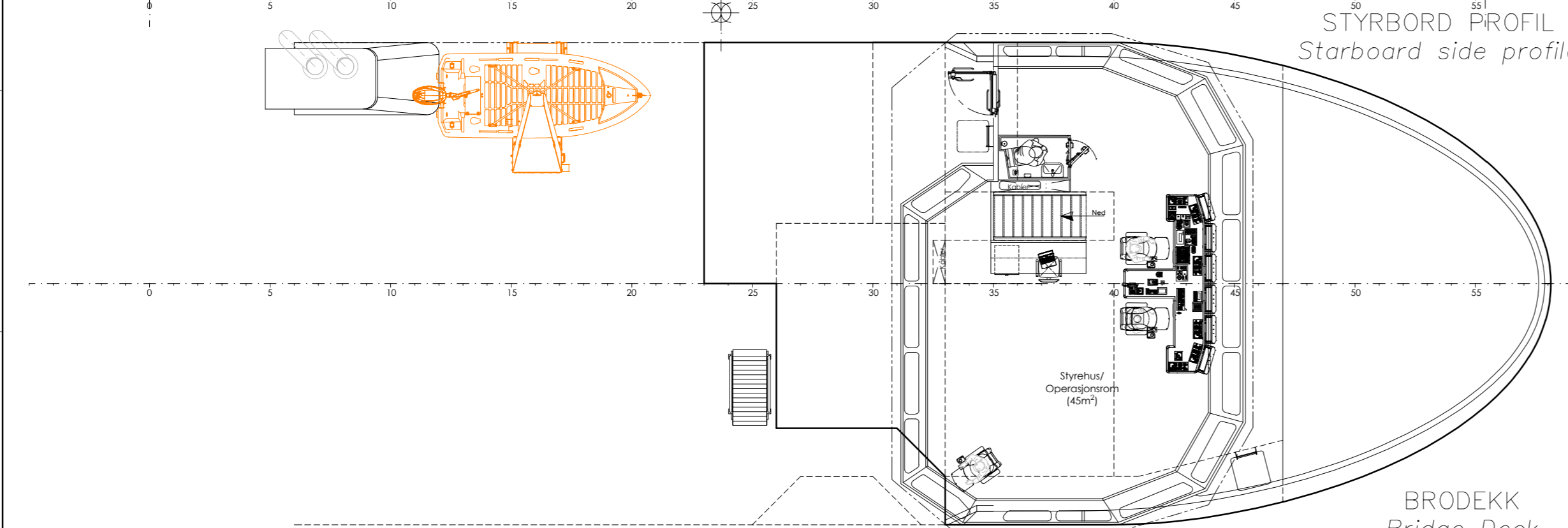
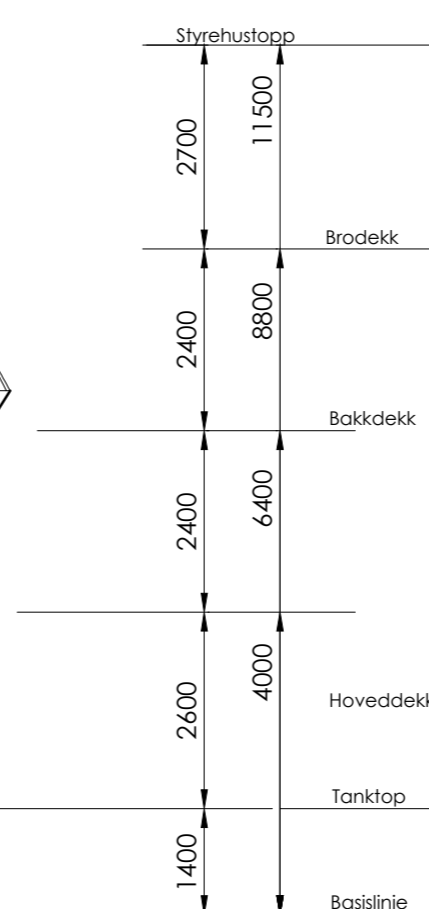
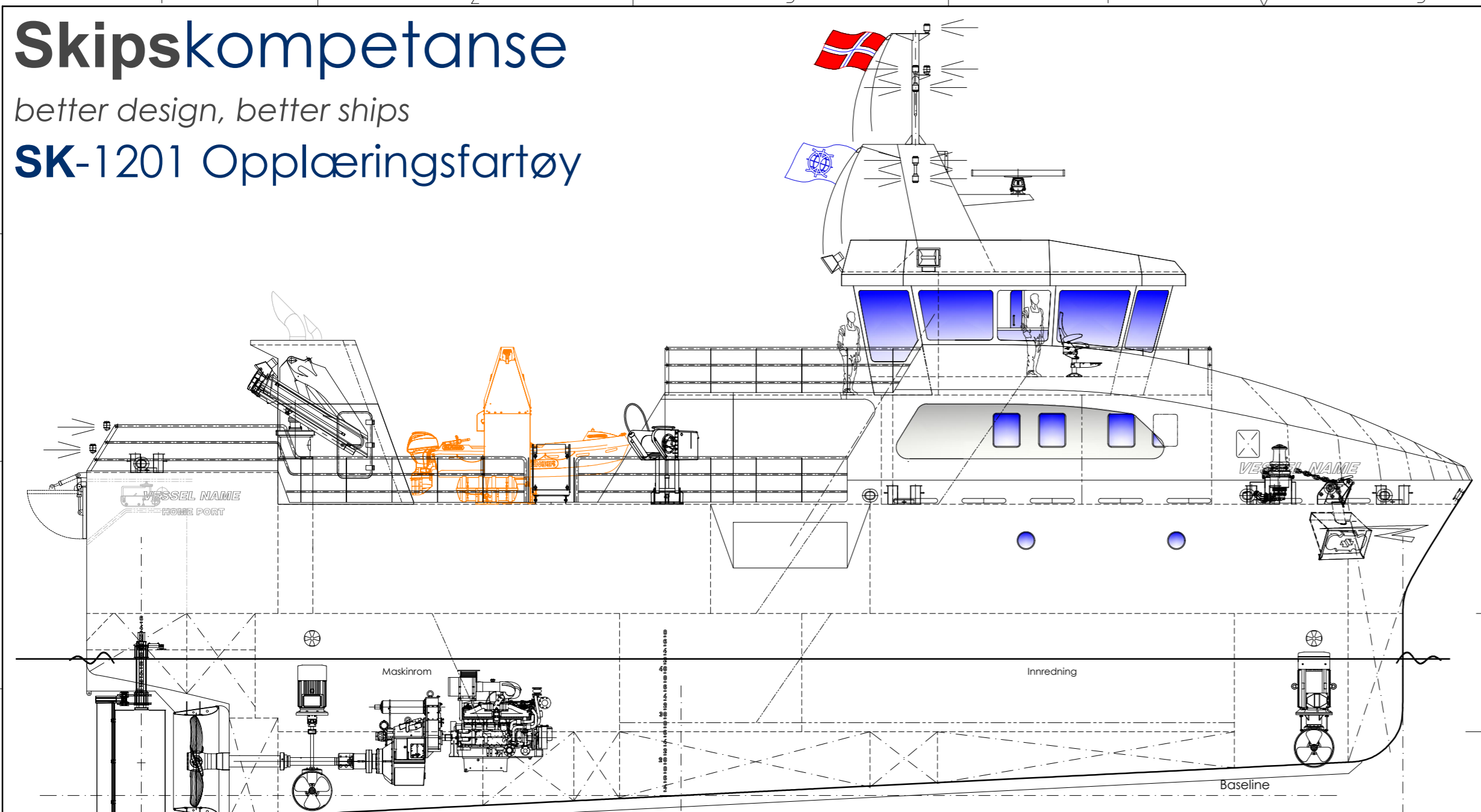


Skipskompetanse

better design, better ships

SK-1201 Opplæringsfartøy



FORELØPIG
02.11.2020

Hoveddimensjoner

Main Particulars

(Alle mål er omtrentlige og foreløpige/all particulars are approximate and preliminary)

Lengde over all	: 30,42 m
Lengde mellom p.p.	: 27,70 m
Spantavstand	: 500 mm
Bredde	: 10,00 m
Beam	
Dybde til hoveddekk	: 4,0 m
Depth to Main deck	
Frame distance	

Kapasiteter

Capacities

(Alle mål er omtrentlige og foreløpige/all particulars are approximate and preliminary)

Brennolje	: ~TBD m ³
Fuel Oil	
Ferskvann	: ~TBD m ³
Fresh water	

Innredning for 20 mann i 9 lugarer
Accommodation for 20 persons in 9 cabins

Regelverk: NMA, bankfiske I, Liten kystfart

This drawing is the property of Skipskompetanse and can therefore not be copied, reproduced, made use of and or be shown to third party with out our written permission. The reception of the drawing implies that the conditions as mentioned herein are accepted

Denne tegningen er Skipskompetanse sin eiendom, og kan derfor ikke kopieres, reproduseres, benyttes av og eller fremvises til tredjepart uten vår skriftlige tillatelse. Mottak av tegningen innebærer at denne forutsetningen er akseptert.

Rev.:	Description:	Rev. date:	Sign:
A00	For prising	02.11.20	KA
Customer:			
Yard:	Yard no.:	Format:	Sheet:
		A1	1/1
Title:		DRW No (Project-SF-Det):	Rev.:
General Arrangement Opplæringsfartøy SK-1201		101-001	A00
Scale:	Drawn:	Date:	
1:100	SK	25.10.2020	

This drawing is the property of Skipskompetanse and can, according to international laws, not be copied, reproduced, made use of and or be shown to third party with out our written permission. The reception of the drawing implies that the conditions as mentioned herein are accepted