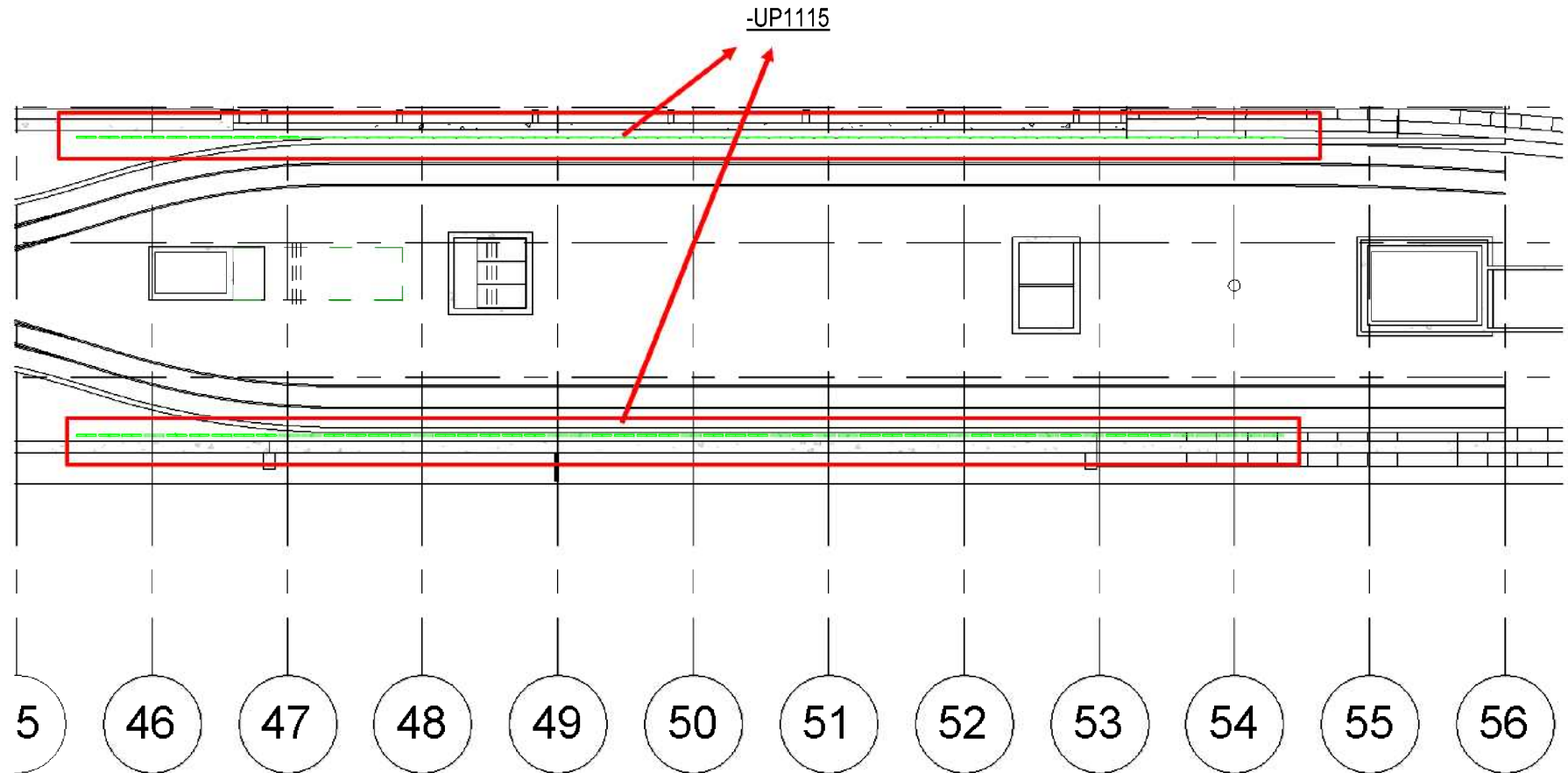
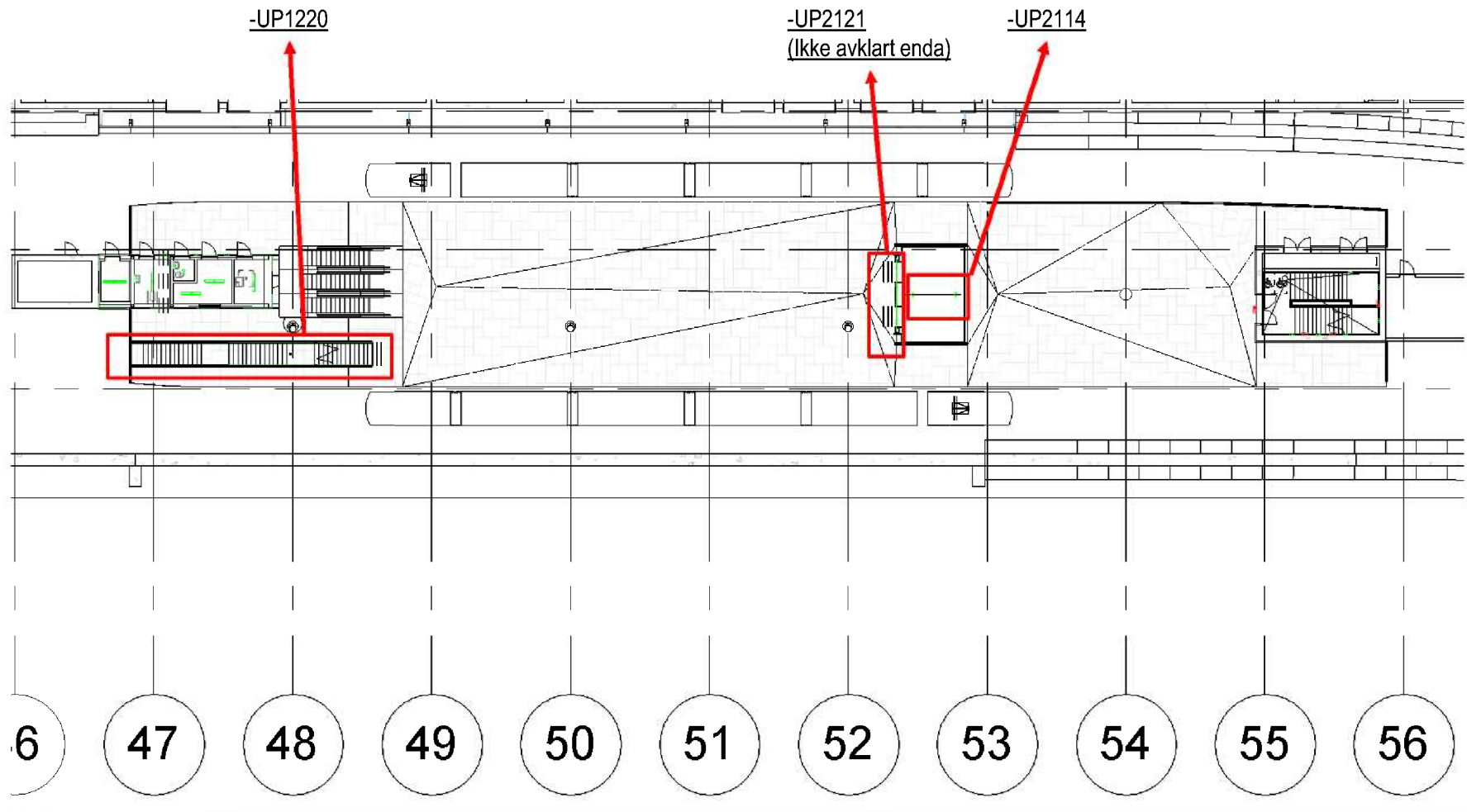


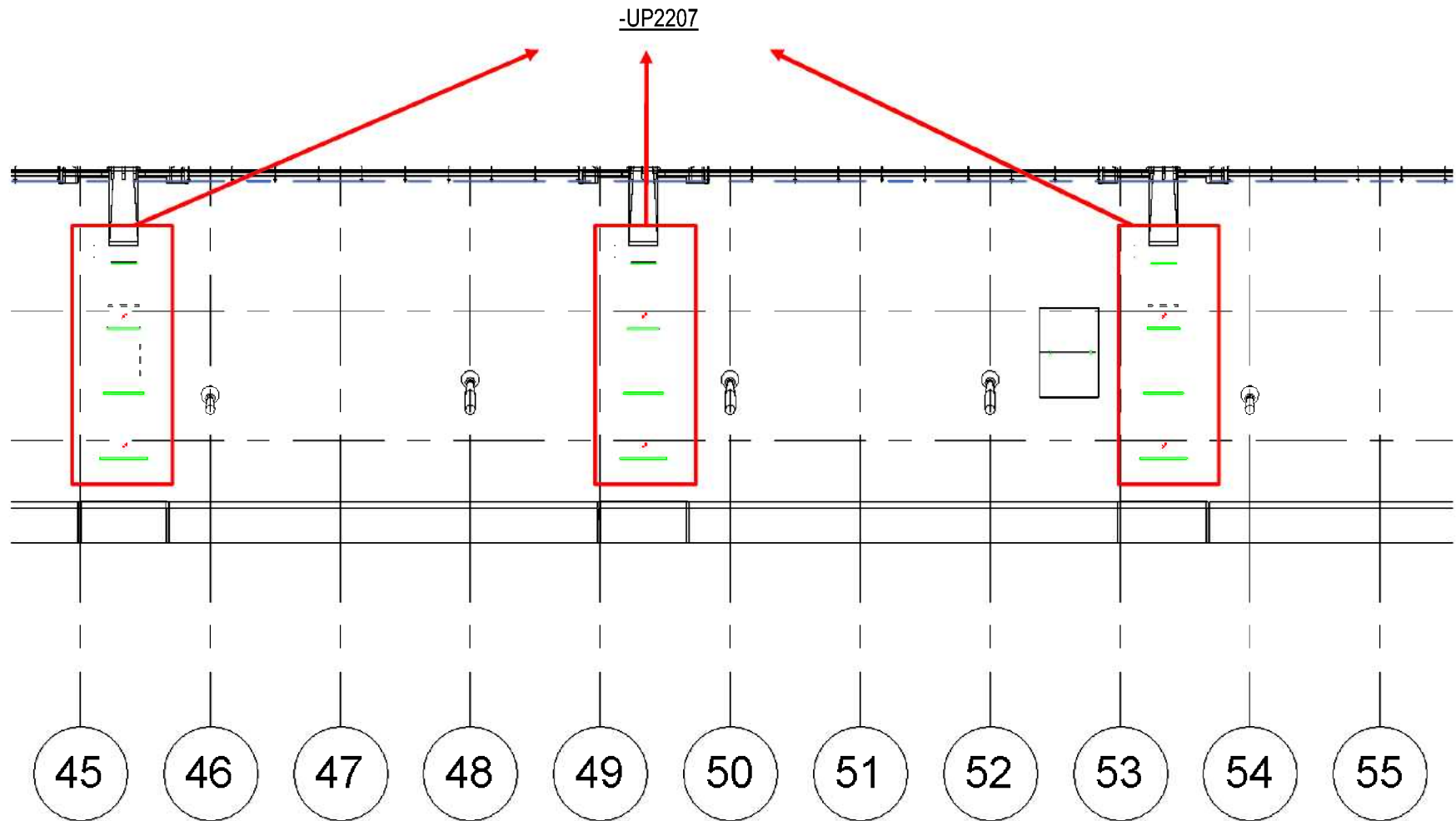
Belysningsplan nivå B (Opplys):



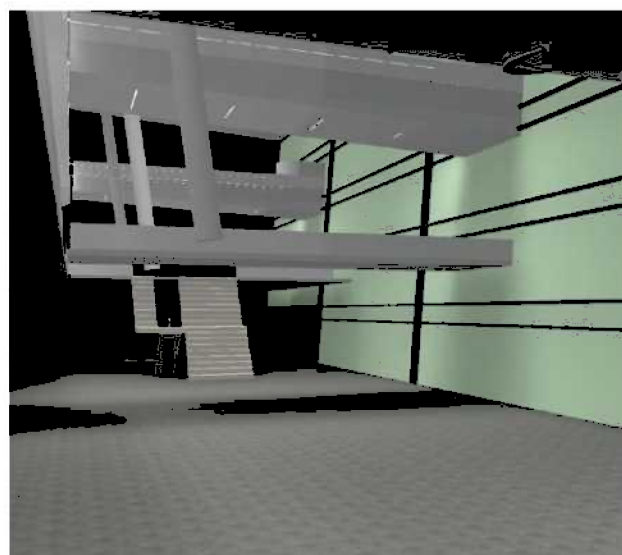
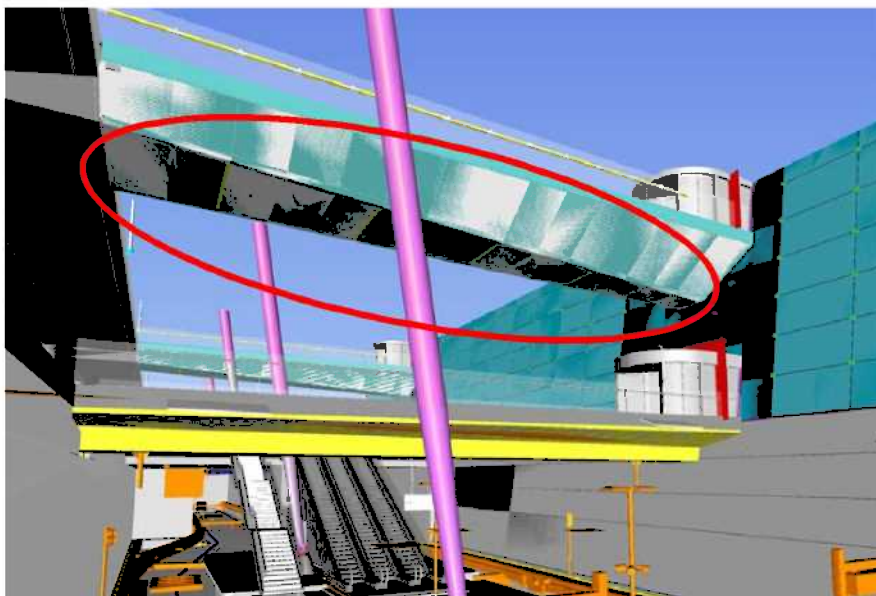
Belysningsplan nivå B:



Belysningsplan nivå D/E:



Belysning under inngangsbroer, nivå D/E:



ARCLUCE

RAY LINEA T5

H7312

TECHNICAL INFORMATION

POWER: 1x 54 W
LAMP: FD G5, 54W, 5000 lm, 4000 K, 80 CRI, 86 lm/w
WIRING: CEI, CEI-EM, DALI, DIMM, DALI-EM, DIMM-EM
DIMENSIONS(MM): width 97 height 100 depth 1246
WEIGHT: 5,45 Kg

DESCRIPTION

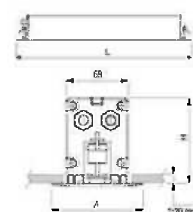
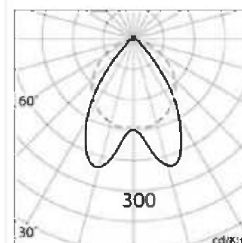
Extruded aluminium body.
Die-cast aluminium caps.
Anodized aluminium reflector (specular non-iridescent).
Polyester powder paint resistant to corrosion, atmospheric conditions and salt spray fog.
Thermal-shock resistant tempered safety glass.
Silicone rubber gaskets.
Double M 16 cable gland for cascade connection.
Stainless steel external screws.
It complies with the EN 60598-1 and EN 60598-2-2 Standards.

NOTE

If the wall is wooden type or plasterboard you can use RAY-LINEA

SPECIFICATION

RAY T5 is a ceiling recessed fixture with a plain and linear shape and is designed to lighten indoor and outdoor areas, where a high-level protection is required (IP67). It is characterized by an extruded aluminium body (which hosts the electronic ballast), die-cast aluminium end caps and 8mm thick glass. It is available in three different sizes in order to best meet each individual requirement. It houses T5 lamps (with G5 connection, 16 mm diameter and power ranging from 14W to 28W and 35W) and also innovative lighting systems such as LEDs. The appliance is fixed to the ceiling by means of two clips situated on both sides and to be fastened by means of a screwdriver.



ACCESSORIES

O7388
Coloured fibres 28 W.



O7928
Technopolymer glare-control louvre.



IP67



IK10

Belysning langs betongvegg, nivå B:

HOKIN

Satin 2

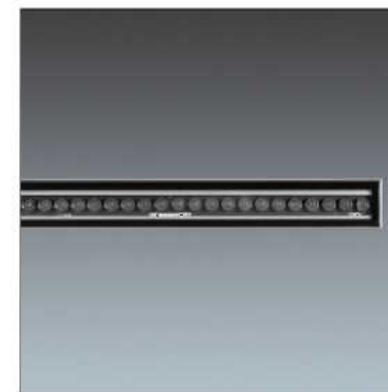
96264999 SATIN2 MWA L1230 48L35 12x44° 840 IN

LED	82W LED_4026	T ₂ 25	IP67	IK08	CE	860°C
-----	--------------	-------------------	------	------	----	-------

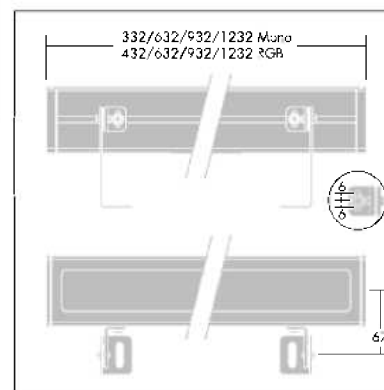
Satin 2

Diskret flomlys for fasadebelysning. 48 LED drives av 350 mA med 12 x 44° fordeling. Elektronisk forkobling, LED-forkoblingsutstyr. Armaturhus: ekstrudert aluminium (EN AW-6060 T6) lakkert teksturet sølvgrå. Sider: grå polykarbonat. Avskjerming UV-stabilisert polykarbonat. Festeøyler pulverlakkert stål. Elektrisk dobbeltisolert klasse II, IP67, IK08. Monteres på overflate eller nedfelt i boks (tilleggsutstyr). Ferdigkablet med 1 m med 2 x 1 mm² H05RNF-kabel (og 1 m med DMX512-kabel for DMX-varianten) i én ende. Med 4000K LED

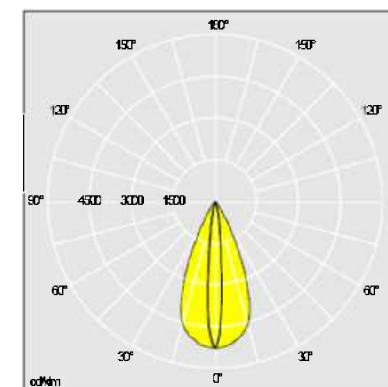
Mål: 1232 x 75 x 70 mm
 Total effekt: 52 W
 Vekt: 4.8 kg



TLG_SAT2_F_LEDS.jpg



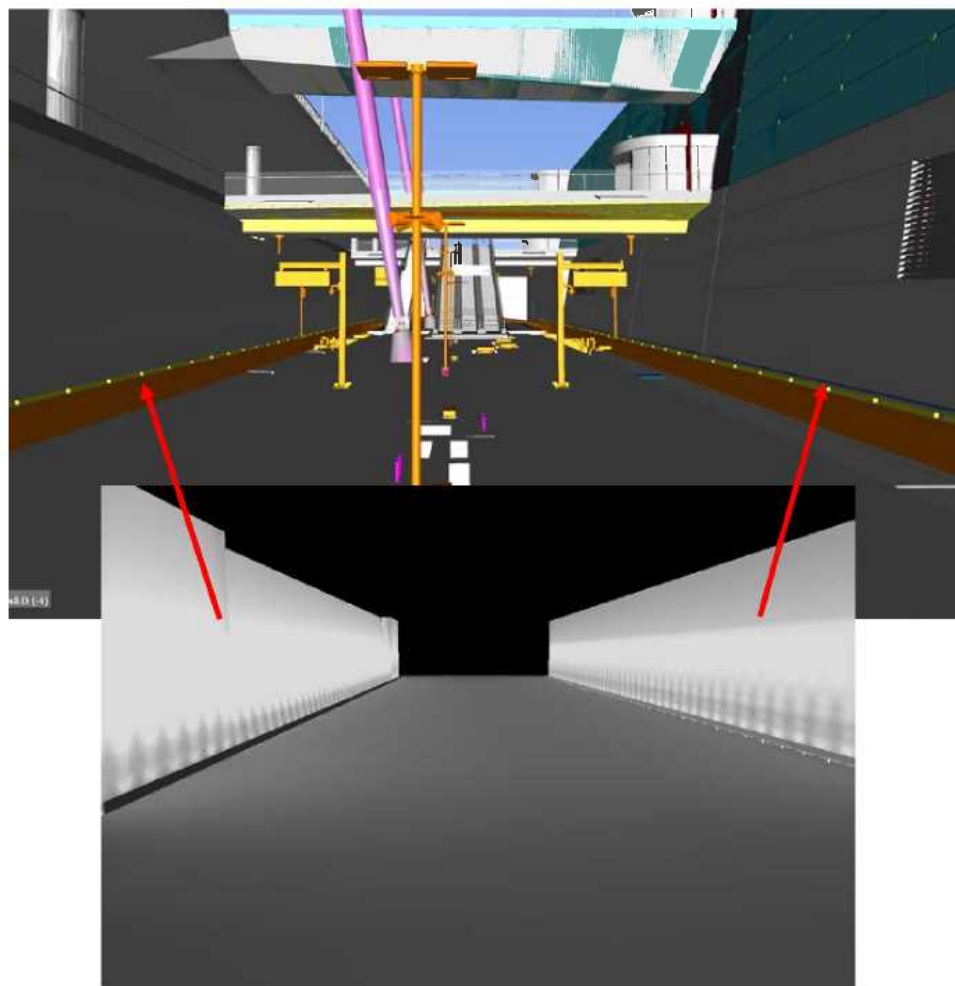
TLG_SAT2_M_LD1.wmf



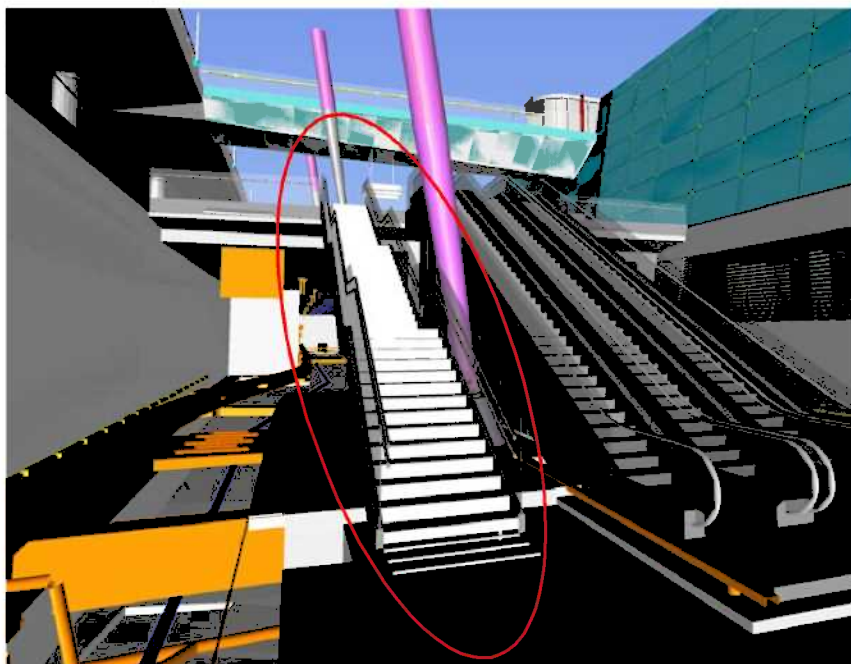
TLLA_S494KE_DC.net

Lampeposisjon: STD - standard
 Lyskilde: LED
 Lumenverdien i alle retninger: 4026 lm
 Armatureffektivitet: 77 lm/W
 Lyskildeeffekt: 77 lm/W

Gjennomsnittlig levetid*: 50000h at 25°C
 Driver: 1x EL2
 Systemeffekt*: 52 W Lambda = 0.9
 Dimming: DIM_LED
 LOR: 1,00 ULOR: 0,00 DLOR: 1,00



Belysning i publikumstrapp, nivå B:



DATASHEET

liniLED® Top Power

Warm White 2700 K
Warm White 3000 K
Natural White 4000 K
Cold White 6500 K



liniLED® Top Power

liniLED® is een hoogwaardige, flexibele LED Strip. Deze flexibiliteit zorgt voor een zeer brede toepasbaarheid. liniLED® kan zowel binnen als buiten in functionele en decoratieve toepassingen worden verwerkt.

liniLED® Top is een zeer flexibele LED strip met co-extrusie technologie. Hierdoor verdwijnt er geen licht aan de achterkant van de strip, al het licht wordt naar de voorkant gereflecteerd. Zodoende ontstaat er geen hinderlijke reflectie op plaatsen waar u die niet wilt hebben.

Bijzonderheden:

- OSRAM DURIS™ E 5
- Made in Europe
- Zeer flexibel: buigradius 30 mm
- Uitgebreid pakket aan accessoires
- Compacte afmetingen
- Speciale reflectie
- Binning < 100 K
- Verkrijgbaar in lange lengtes

liniLED® Top Power

liniLED® is a high-quality flexible LED Strip that allows for an endless range of applications. liniLED® can be applied both indoors and outdoors, as functional or decorative lighting.

liniLED® Top is a highly flexible LED strip with co-extrusion technology. Light will only be emitted at the front, through the built-in reflector. Therefore, especially suitable in areas where reflection, other than at the front, is not required or unwanted.

Features:

- OSRAM DURIS™ E 5
- Made in Europe
- Very flexible; bending radius 30 mm
- An extensive range of accessories
- Compact dimensions
- Built-in reflection
- Binning < 100 K
- Available in long lengths



Belysning i heissjakt (glassheis), nivå B:



C40
C40132200



C40 128HF

En lyslist tilpasset dimensjonene og funksjonaliteten til T5 lyskilde. Armaturen kan enkelt tilpasses for bruk i skjulte gasimsløsninger eller som hyllebelysning. Armaturhus i hvitlakkert stål med hvite ABS endestykker.

Elnummer: 3324910



Elektriske data	
Spenning fra (V)	230
Spenning til (V)	240
Maksimal frekvens (Hz)	60
Frekvens (Hz)	50
Totalt effektforbruk (W)	31

Dimensjoner	
Lengde (mm)	1181
Høyde (mm)	71
Bredde (mm)	38
Nettovekt	1,3

Armaturhus	
Farge	Hvit
Materiale	stål



Lyskilde	
Antall lyskilder	1
Lampholder	G5
Lampeeffekt (W)	28
Lyskilde	lysrør T5

Teknisk data	
IP klasse	20
Maksimal omgivelsestemperatur (Ta=°C)	50

Ballast	
Forkobling	HF - elektronisk
Antall forkoblinger	1

Tilkobling	
Tilkobling	3x2x2,5-PI

