

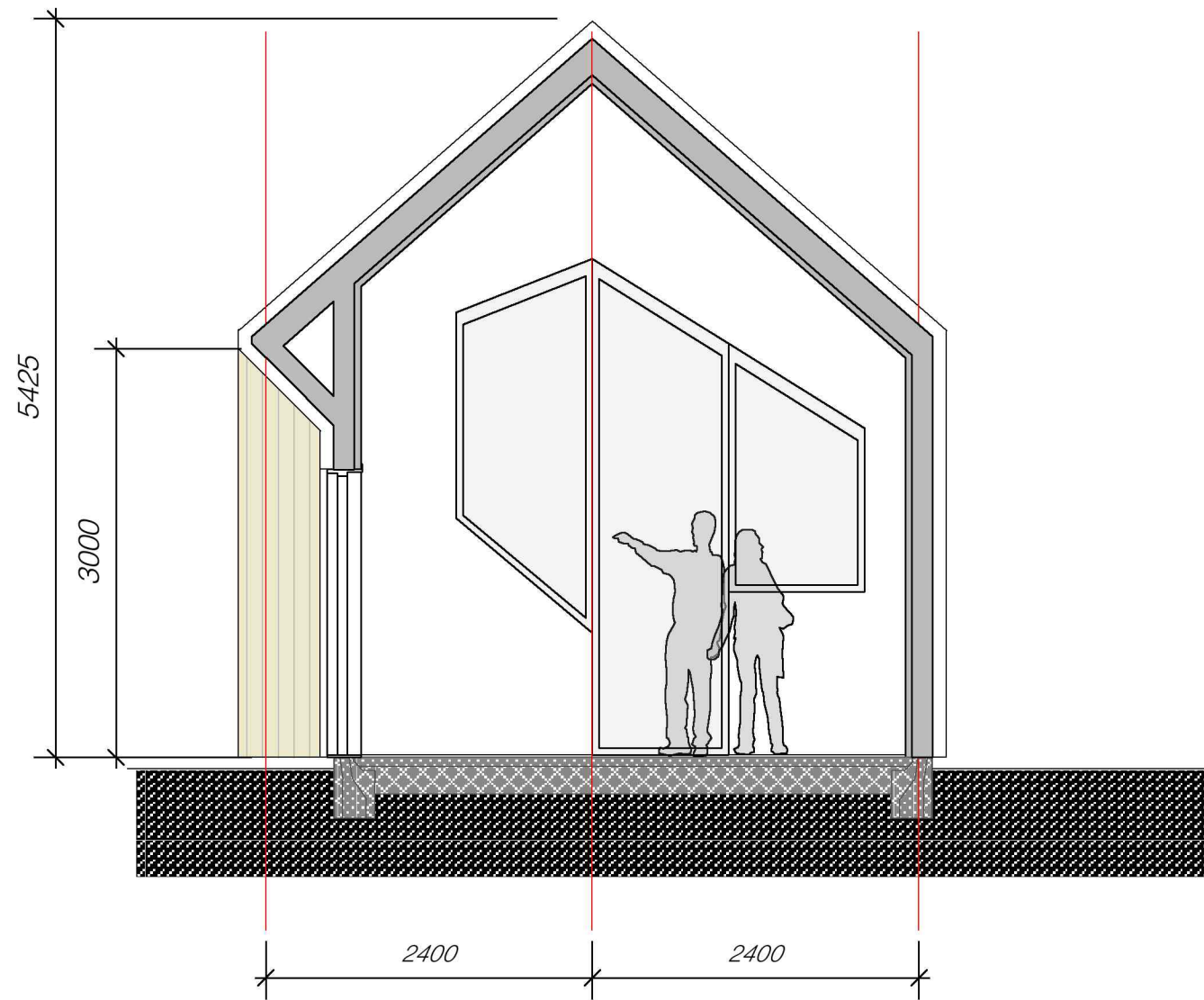
AREAL VENTEROM/++:  
BTA 41,1 M2  
NTA 36,3 M2

AREAL TOALETANLEGG:  
BTA 15,5 M2  
BRA 12,9 M2

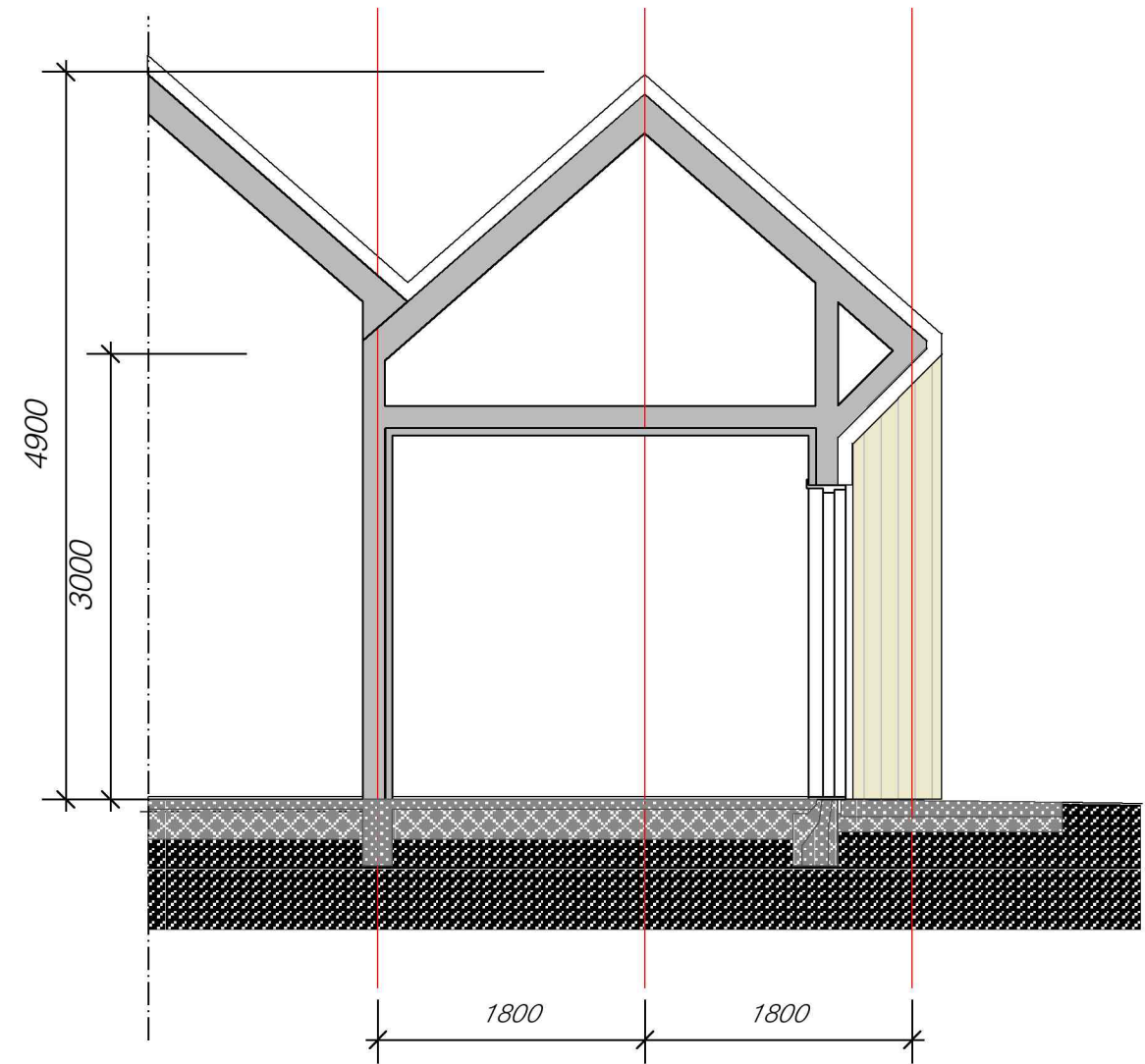
AMV	180216
AMV	290116
AMV	161115

Jondal kommune, 5627 Jondal  
**JONDAL FERGEKAI, KAIBYGG**

Plan 1:500 2434-01



*Snitt venterom*



*Snitt toalett*

AMV	180216
AMV	270116
AMV	161115

Jondal kommune, 5627 Jondal

**JONDAL FERGEKAI, KAIBYGG**

*Snitt venterom/toalett*

1:50

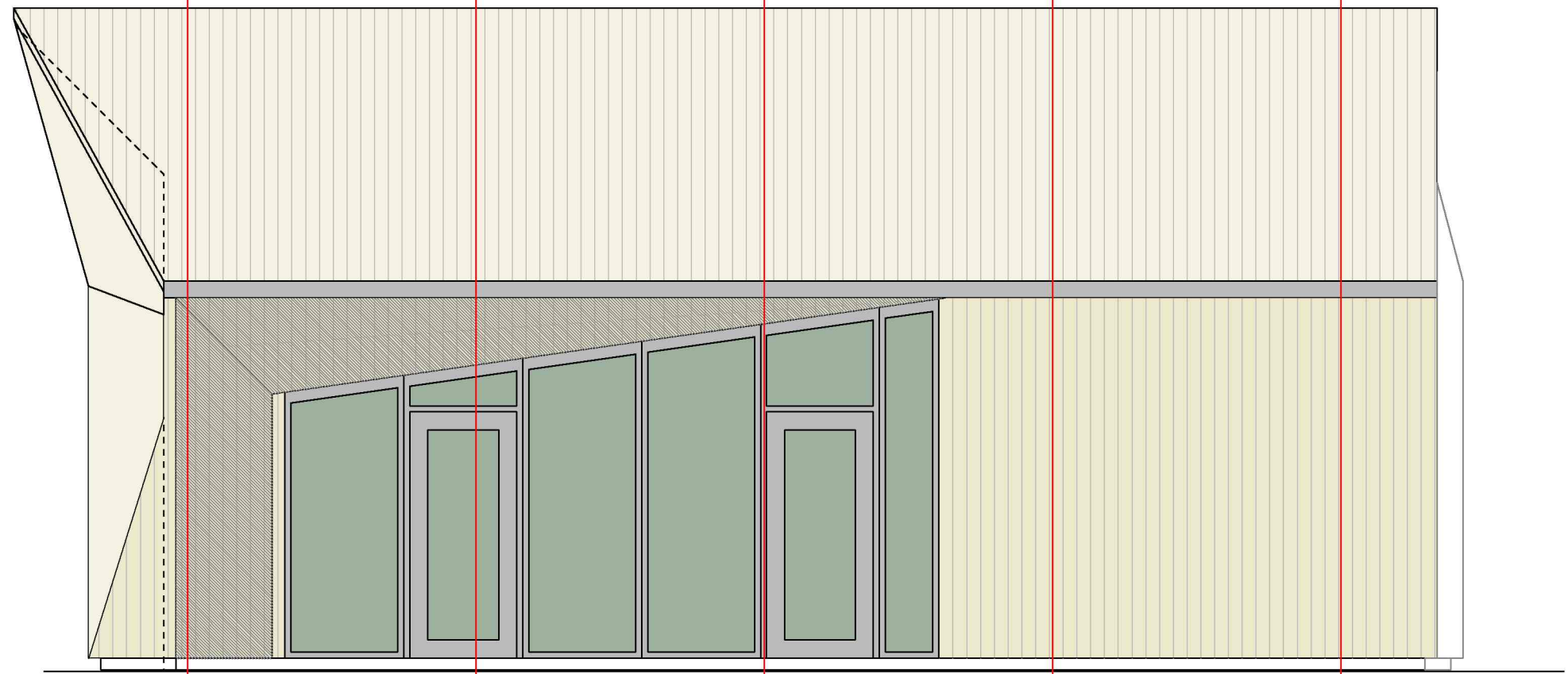
2434-02

**GEOPLAN AS**

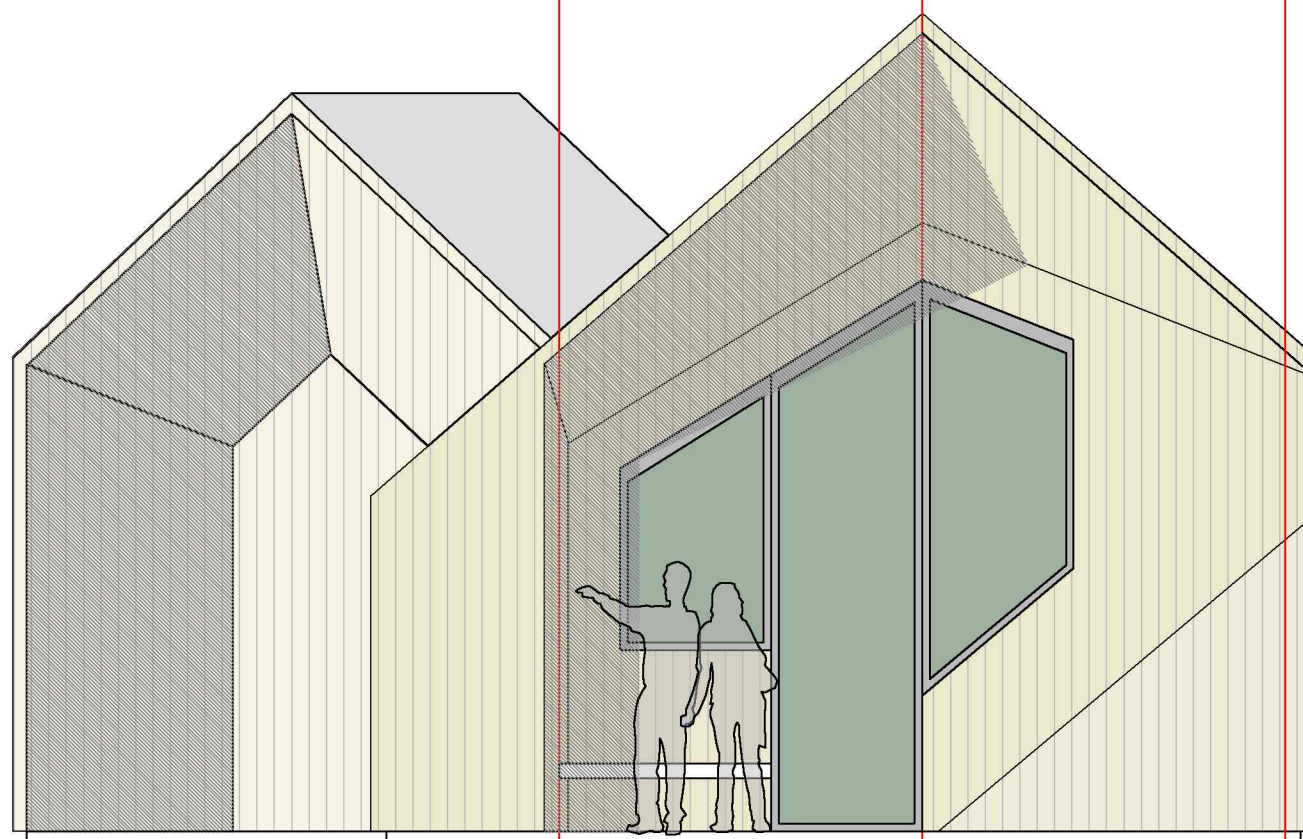
Arkitektur | Plan | Kart

www.geoplan.no Sandvenvegen 18/pb 95 5601 Norheimsund tlf: 56 55 62 33 e-post: post@geoplan.no





*Fasade sør*



*Fasade vest*

AMV	180216
AMV	270116
AMV	161115

Jondal kommune, 5627 Jondal

**JONDAL FERGEKAI, KAIBYGG**

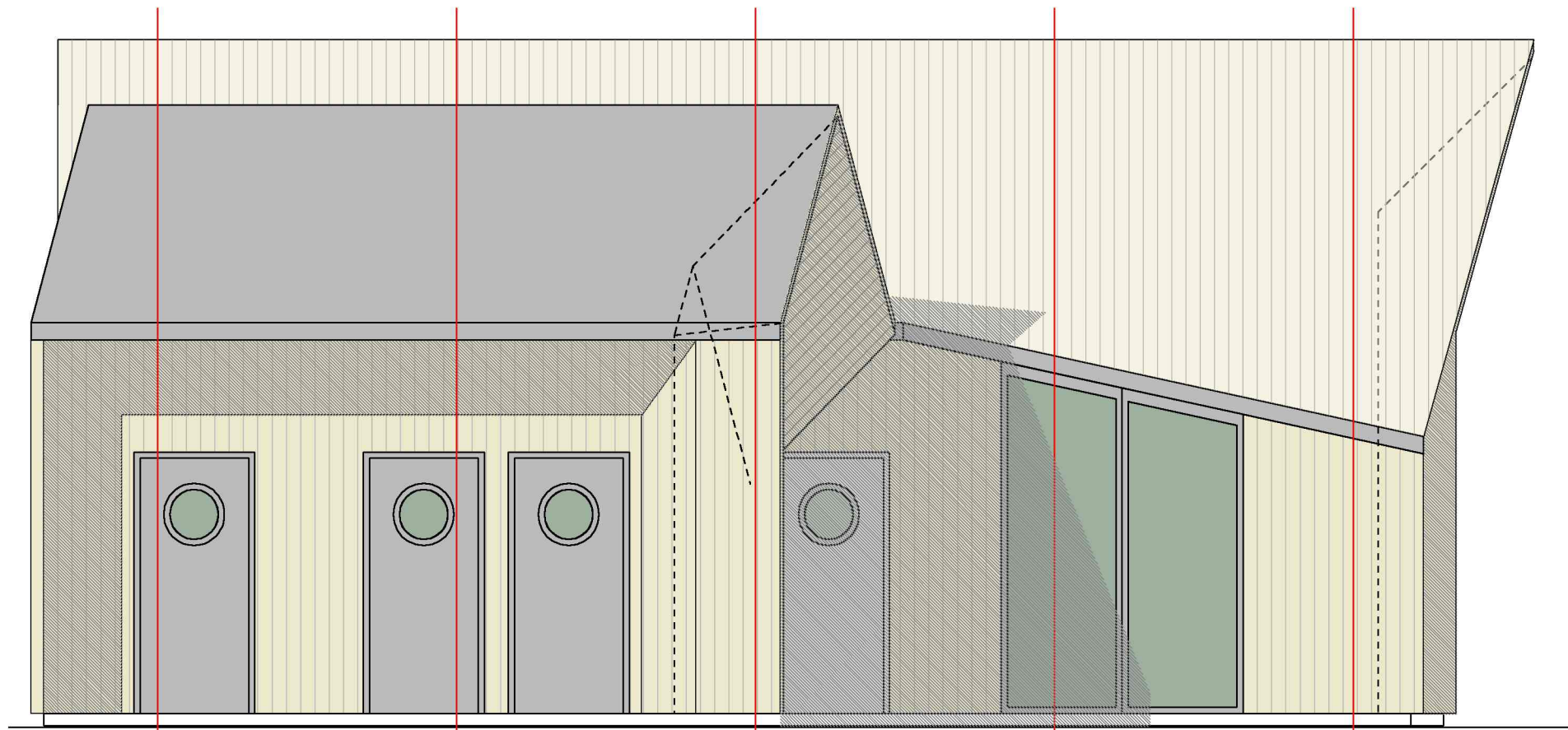
*Fasade sør og vest*

1:50 2434-03

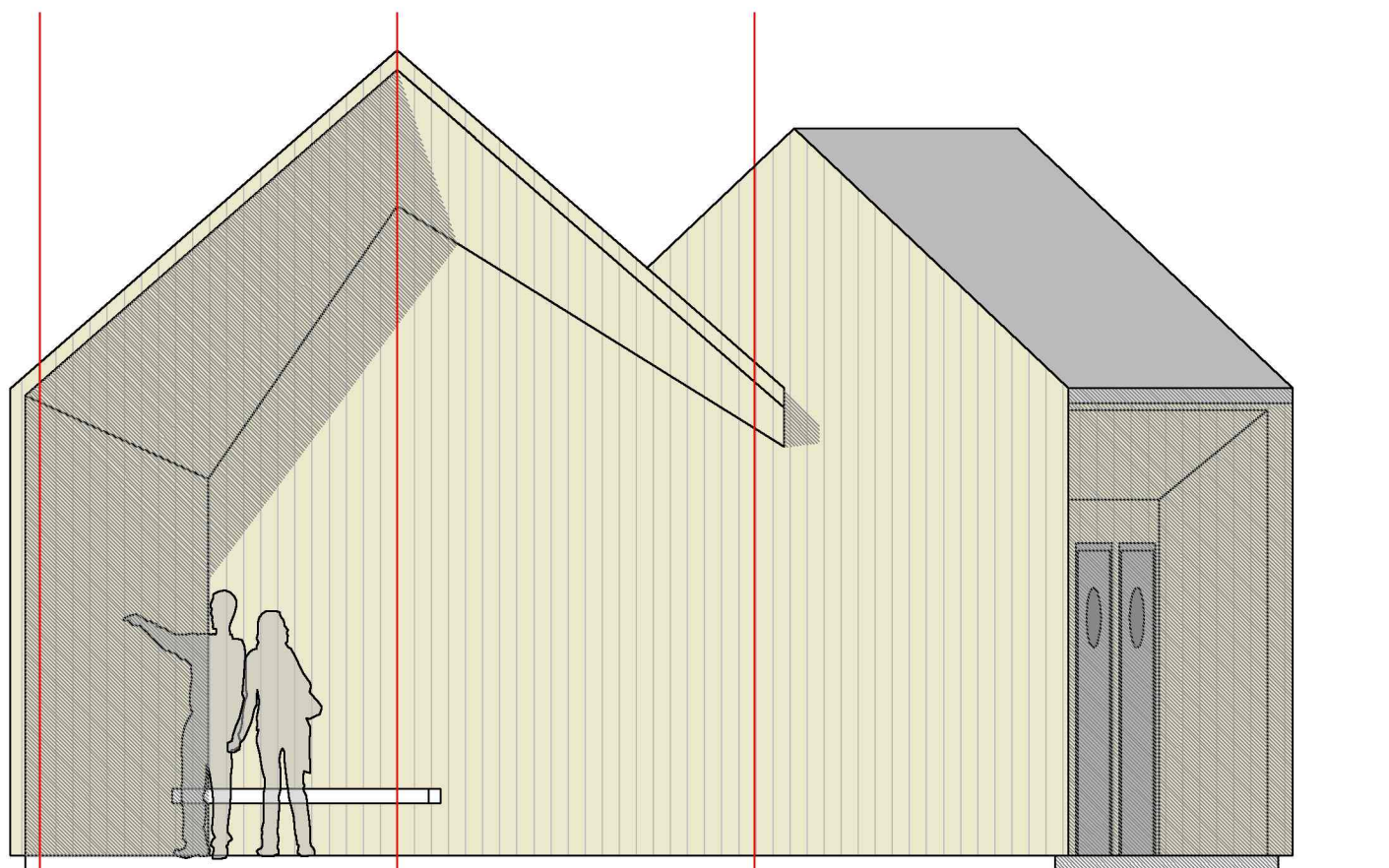
**GEPLAN AS**

Arkitektur | Plan | Kart

www.geoplan.no Sandvenvegen 18/pb 95 5601 Norheimsund tlf: 56 55 62 33 e-post: post@geoplan.no



*Fasade nord*



*Fasade aust*

AMV	180216
AMV	270116
AMV	161115

Jondal kommune, 5627 Jondal

**JONDAL FERGEKAI, KAIBYGG**

*Fasade nord og aust*

1:50 2434-04

**GEPLAN AS**

Arkitektur | Plan | Kart

www.geoplan.no Sandvenvegen 18/pb 95 5601 Norheimsund tlf: 56 55 62 33 e-post: post@geoplan.no