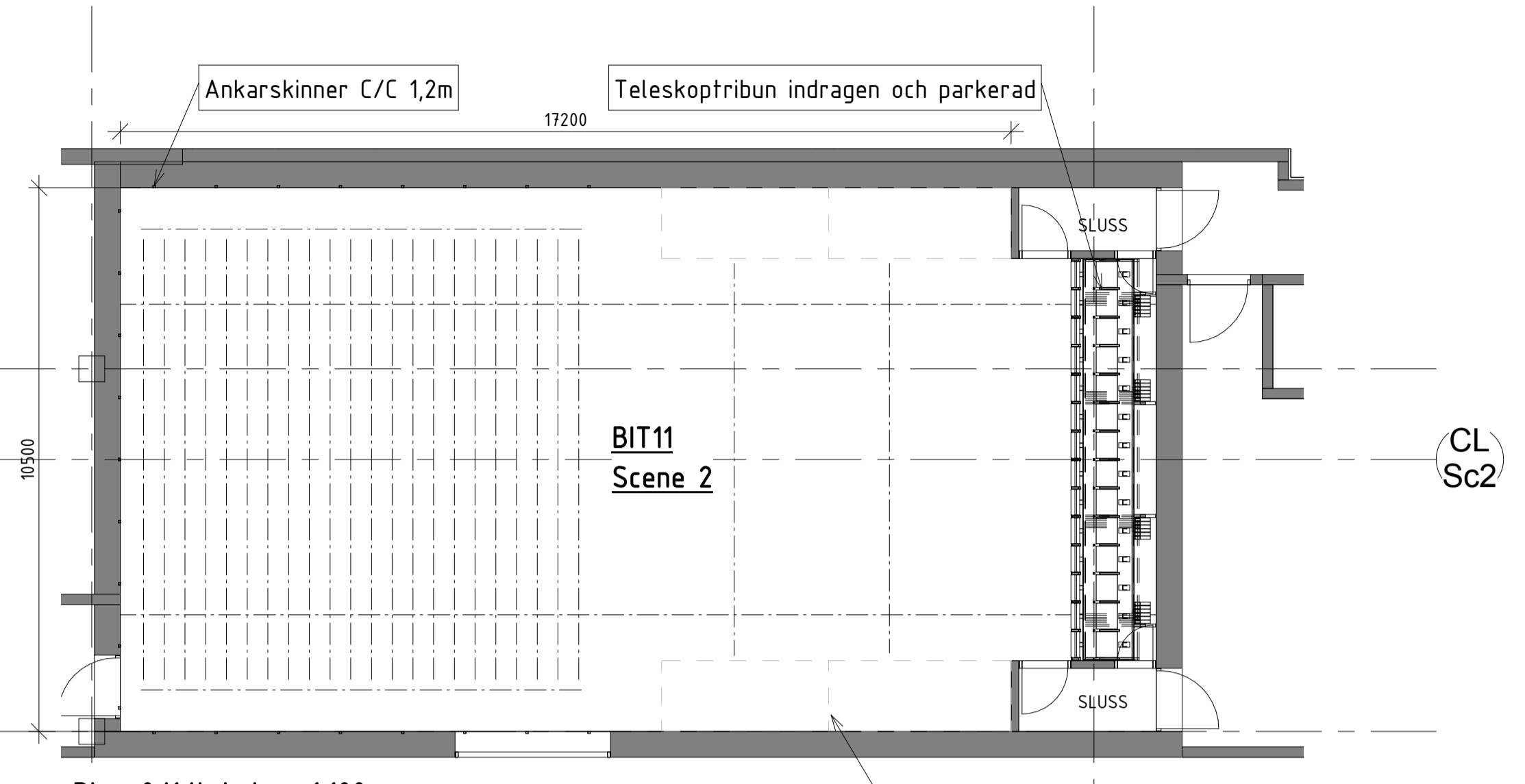
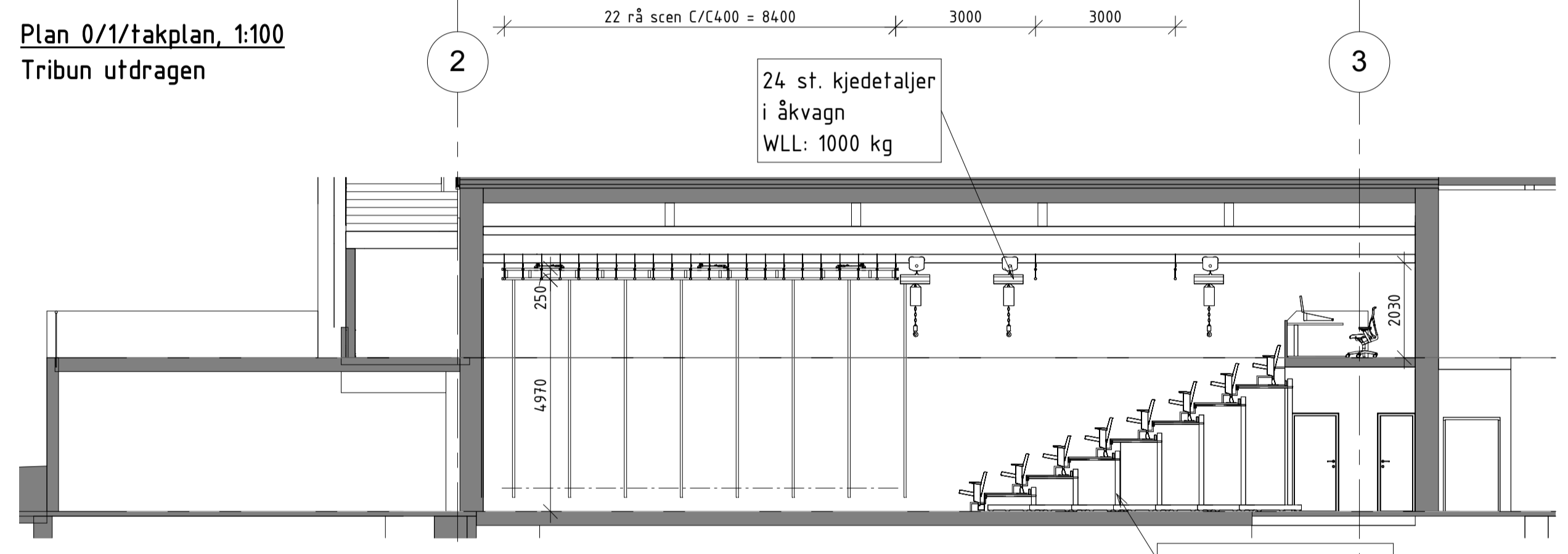


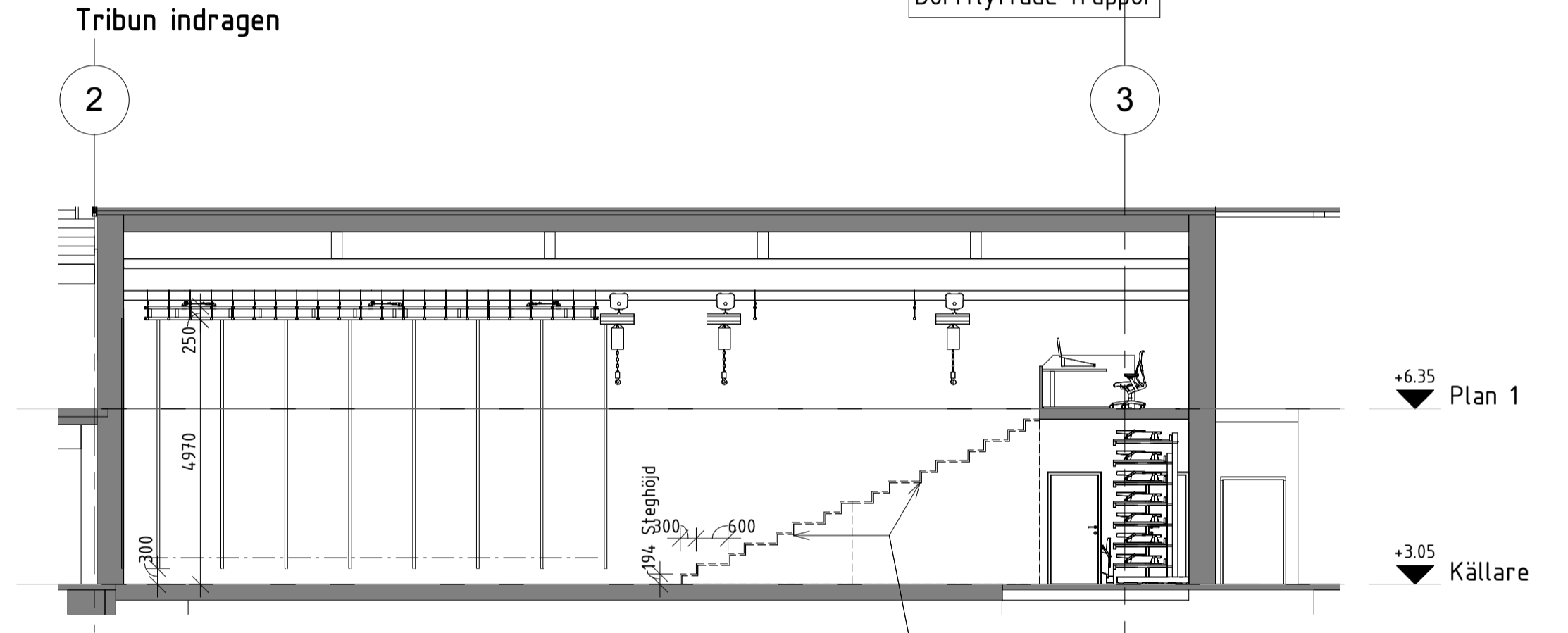
Plan 0/1/takplan, 1:100  
Tribun utdragen



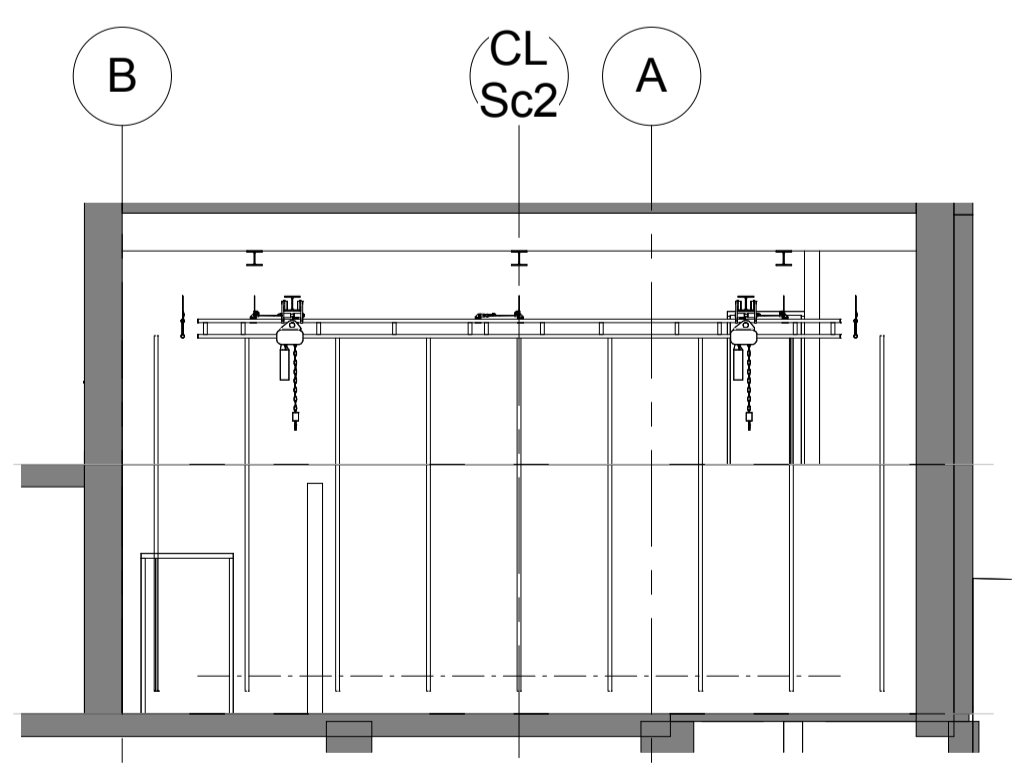
Plan 0/1/takplan, 1:100  
Tribun indragen



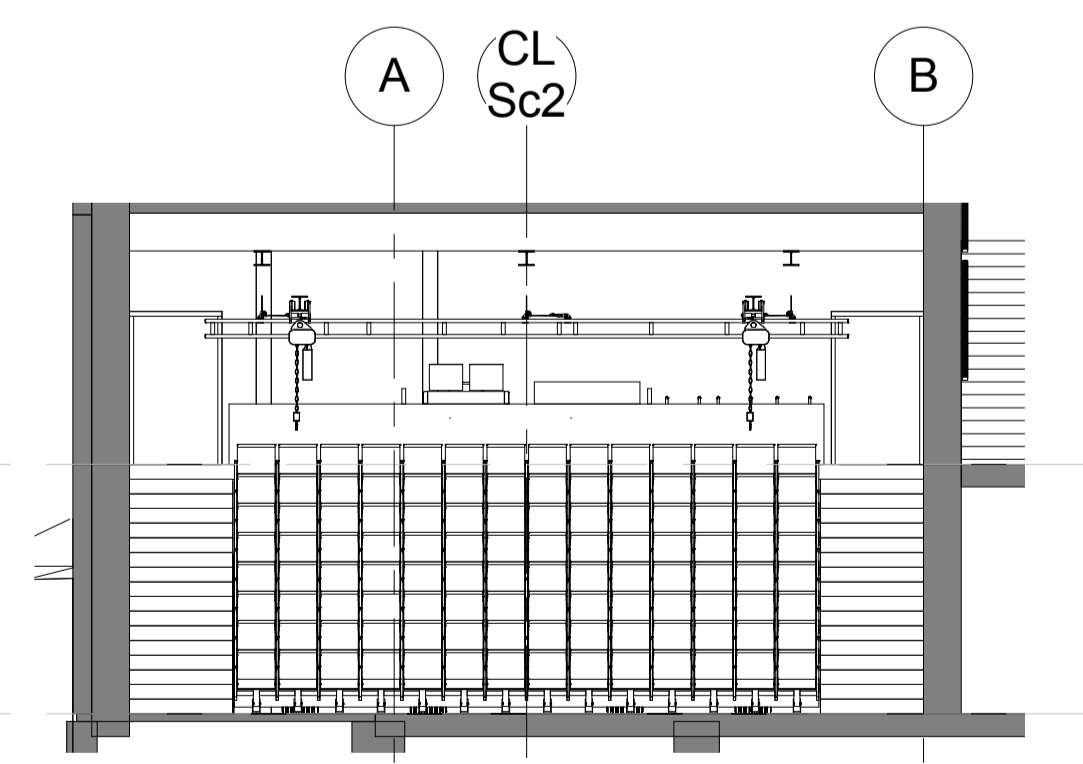
Längdsektion CL, 1:100  
Tribun utdragen



Längdsektion CL, 1:100  
Tribun indragen



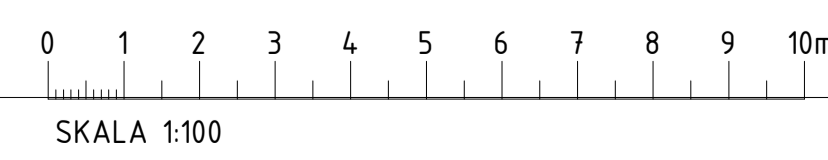
Tvärsektion mot scen,  
1:100



Tvärsektion mot salong, 1:100

Teleskoptribun  
112 platser C/C 550  
Platfordsdjup: 900mm  
Platfordshöjd: 388mm  
Steghöjd: 194mm

BET	ÄNDRINGEN AVSER	DATUM	SIGN
<b>Skisseprojekt</b>			
<b>SBS - Sentralbadet Scenekunsthuss</b>			
AIX Arkitekter AB		Hudsvallsgatan 8, 133 30 STOCKHOLM Tel: 08-690 29 00	
OBJEKTSNUMMER	PROJEKTNUMMER	Project Number	
LUPPROG NR 4.11604-1	RITAD/KONSTR AV SHKu	HANDLÄGGARE SHKu	
DATUM 01.09.2016	ANSVARIG ToNo		
TEATERTEKNIKK SCENE 2			
SKALA (avser A1-format)	NUMMER		
1: 100	RISC.200-9-01		



2016-08-29 17:13:13 C:\CAD\_TEMP\Revit\_2016\Lokal\_Kopia\SBS\_RISC\_stkur.rvt

